



ACTIVE™ PREMIUM WALL MOUNT AND HOSE REEL KIT

Version: 2025
V14

User Manual

MODEL NO. SH01

Congratulations on the purchase of your new ACTIVE™ Wall mount and hose reel kit. In order to ensure you have the best possible experience, please read through the following instructions.



**IMPORTANT SAFETY INSTRUCTIONS, KEEP THIS
INSTRUCTION MANUAL WITH MACHINE ALL TIMES.**

active

Table of Contents



1. IMPORTANT PRECAUTIONS.....	3
1.1 Definitions.....	3
1.2 Safety Warnings	4
1.3 Intended Application.....	4
2. EXPLODED VIEW.....	5
3. PARTS LIST.....	5
4. ASSEMBLY INSTRUCTIONS.....	6
4.1 Wall Mount - Direct to 16" Studs.....	6
4.2 Appendix A	7
4.2 Appendix B.....	7
4.3 Parts Installation	8
4.4 Shelf Mounting Your Pressure Washer	8
4.5 Installing Accessories.....	10
5. TECHNICAL SPECIFICATIONS.....	10
6. TROUBLESHOOTING	11
7. WARRANTY.....	12



Important Precautions


1. Important Precautions

IMPORTANT, RETAIN FOR FUTURE REFERENCE AND READ CAREFULLY!

Do not attempt to install or operate this device until you have read the safety instructions in this manual. Safety items throughout this manual are labelled with **Danger, Warning, or Caution** depending on the risk type.

Failure to follow or comply with the instruction manual in product set-up, usage or storage will void the warranty.

1.1 Definitions

 This is the safety alert symbol. It is used to alert you to potential personal injury hazards. Obey all safety messages that follow this symbol to avoid possible injury or death.

DANGER

Indicates an imminently hazardous situation which, if not avoided, will result in death or serious injury.

WARNING

Indicates a potentially hazardous situation which, if not avoided, could result in death or serious injury.

ATTENTION

Indicates a potentially hazardous situation which, if not avoided, could result in minor or moderate injury.

IMPORTANT

Installation, operation, or maintenance information which is important but not hazard-related.

1.2 Safety Warnings

DANGER

To reduce the risk of fire, electric shock, explosion or injury to people, read the following:

- This product is intended for domestic garage use only.
- This product should not be stored in a location where it is exposed to rain water and high levels of moisture.
- Installation of this device requires the handling of 2 persons.
- This product is intended for use with the handling and storage of a high pressure system. Please note to follow all protocols specified in the user manual of your pressure washer to ensure mitigations of risk when handling high pressure water, electric current and chemicals.
- This device is rated for use with pressure washer devices. Please use equipment that is not rated higher than the specifications specified in the rating label of this device.

Important Precautions



1. Important Precautions (cont.)

1.2 Safety Warnings (cont.)

WARNING — INJECTION HAZARD

- Pressure washer equipment used with this device can cause serious injury if the spray penetrates the skin. Do not point the gun at anyone or any part of the body. In case of penetration, seek medical aid immediately.

CAUTION — DETERGENTS AND HOT WATER

- This device should not be used for running with any detergent chemicals as the valves and hoses are not rated for use with hot water or chemicals. The use of detergents running through the system can effect operation and void the warranty.

CAUTION — WATER CONNECTIONS

- For use with fresh and clean water only. Do not use this product with other liquids.
- The water supply system must be protected against backflow.
- Never use this product with water contaminated with solvents (e.g. paint thinners, gasoline, oil, etc.).
- Always prevent debris from being drawn into the product by using a clean water source and an additional water filter, if required.
- If this device is connected to a potable water system, the system must be protected against backflow.
- Suitable water temperature: from 5 to 40 °C (41 to 104 °F).

IMPORTANT — MAINTENANCE

- Any assembly, use or maintenance of the product must be carried out by adults only.
- Follow the maintenance instructions specified in the manual.
- If replacement of any parts are needed, use only identical replacement parts.
- Repairing and replacing parts should be done by an adult within the scope of Active documentation for product troubleshooting and maintenance.
- Before servicing, cleaning or removal of any parts, shut the power OFF and release the pressure.

1.3 Intended Application

This product is intended for use with the handling and storage of a high pressure system. Please note to follow all protocols specified in the user manual of your pressure washer to ensure mitigations of risk when handling high pressure water, electric current and chemicals.

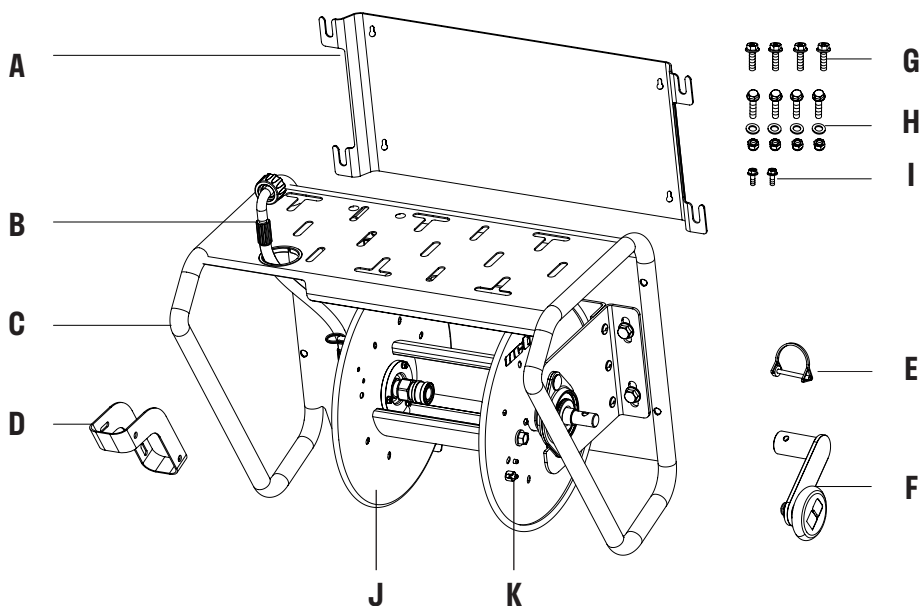
This device is rated for use with pressure washer devices. Please use equipment that is not rated higher than the specifications specified in the warning label of this device.

 **IMPORTANT SAFETY INSTRUCTIONS, KEEP THIS INSTRUCTION MANUAL ALL TIMES.**



Exploded View / Parts List

2. Exploded View



3. Parts List

Item #	Part Name	Qty.	Part #
A	Mounting Plate	1	SH01-000-0001
B	Jumper Hose	1	SH01-100-0003
C	Hose Reel Frame	1	SH01-001-0000
D	Gun Holster	1	SH01-000-0002
E	Lock pin	1	SH01-101-0001
F	Hand Crank	1	SH01-101-0000

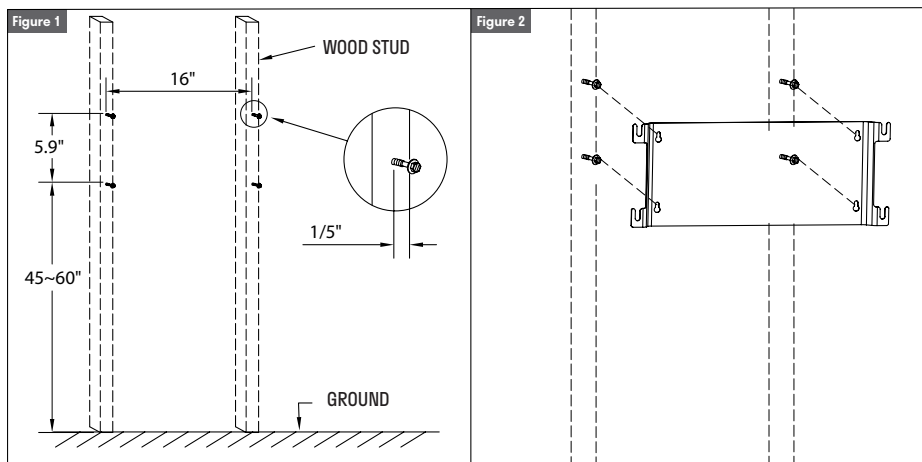
Item #	Part Name	Qty.	Part #
G	ST6 x 30 mm Screw	4	SH01-009-0001
H	M8 Bolt & Nut Kit	4 sets	SH01-090-0002
I	M5 x 14 mm Bolt	2	SH01-090-0003
J	Hose Reel	1	SH01-100-0000
K	Hose Clamp	1	SH01-110-0000

Assembly Instructions



4. Assembly Instructions

4.1 Wall Mount - Direct to 16" Space



1. Locate the adjacent wood studs in the garage (16" spacing in between*) by Stud Finder.
 2. Mark 4 drilling holes by 16" x 5.9" as fig 01, make sure 4 marks are at middle of each stud.
 3. Drill 3/16" hole on each mark, install 4 pcs screw (G) and leave the gap around 1/5" to the wall.
- * For concrete wall installation, see appendix A; for 24" spacing studs installation, see appendix B.**
4. Align mount plate and hang on it onto 4 screws, fasten mount plate to the wall securely.
 5. Once all bolts are in place, use a torque wrench and wrench to tighten down the bolts so that the nut is flush against the frame of the wallmount unit.

ATTENTION

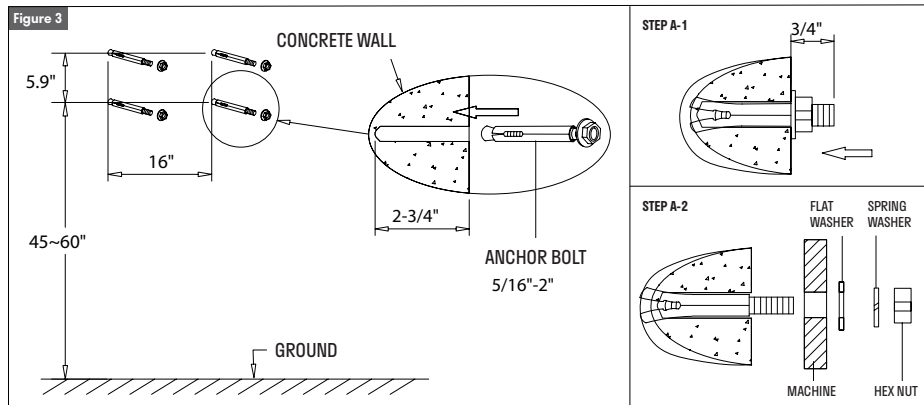
It is advised to have 2 people operating the unit at this step. Lift the unit off the ground and place the bolt in line with the supporting arms of the backing plate. Ensure all 4 bolts are aligned and placed within the support arms.



Assembly Instructions

4. Assembly Instructions (cont.)

4.2 Appendix A : For concrete wall in the garage



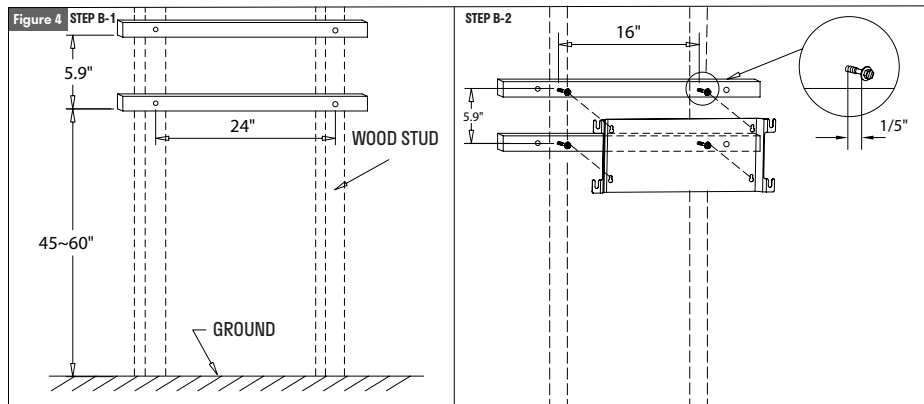
Step A-1

- Use measuring tape to mark 4 drilling holes for screws.
- Drill on the marks using 5/16" drill bits to 2-3/4" depth.
- Nuts are pre-attached to the expansion bolts as shown. Tighten nut until the expansion bolt is extruded 3/4" away from metal cone.

STEP A-2

- Remove hexagon nut, spring washer and one flat washer away from expansion bolt.
- Hang the machine align to the expansion bolt, put on flat washer and spring washer on bolt respectively.
- Fasten hexagon nuts and secure the machine on the wall.

4.2 Appendix B : Mounting screws on drywall with 24" space



Step B-1

- Secure two pieces of 2"x4" wood planks (recommended 28" long) horizontally as shown above.

STEP B-2

- Continue with step in assembly instruction to mount the machine.

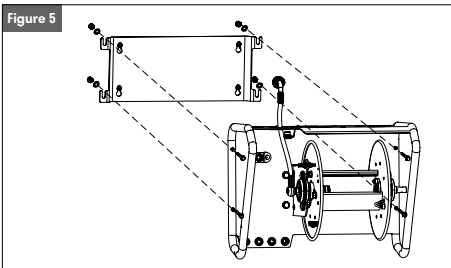
Assembly Instructions



4. Assembly Instructions (cont.)

4.3 Parts Installation

Figure 5

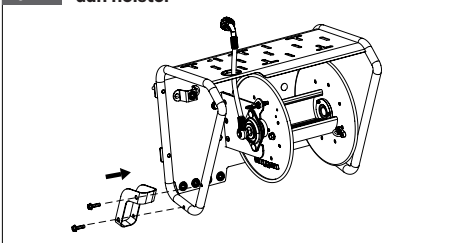


Secure hose reel bracket onto mounting plate (See figure 5)

1. Lift hose reel frame and align 4 holes to 4 slots on mount plate.
2. Secure hose reel frame onto mount plate by bolt & nut set (H) firmly.

Figure 6

Gun holster

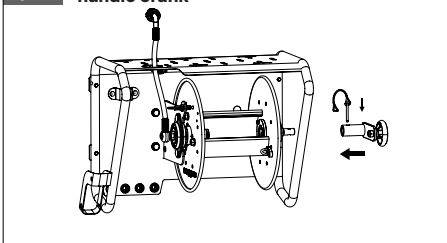


Gun holster (See figure 6)

Use the provided screws (I) and a philips screw driver to place the gun holster on the side of the wall mount as shown.

Figure 7

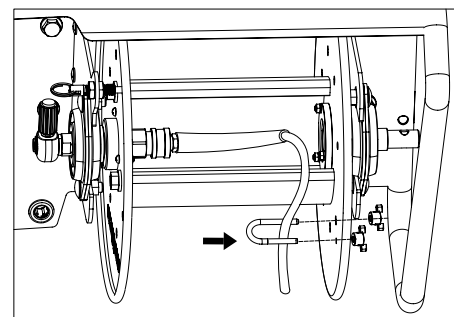
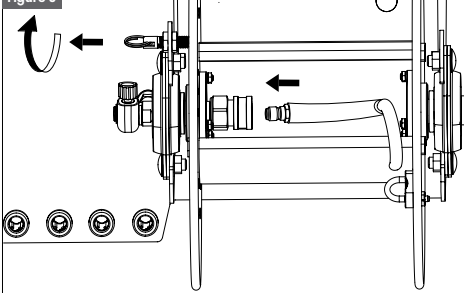
Handle crank



Handle crank (See figure 7)

Use the provided pin (E) to lock the handle in place as seen in the image to the reel barrel.

Figure 8



1. Pull reel lock pin out and turn lock pin 90 degree to disengage the lock
2. Adjust reel opening to face operator.
3. Attach hose connector to quick-connect receptacle in place.
4. Secure hose on right side reel by clamp and fully wrap hose on the reel.
5. Turn lock pin 90 degree and secure hose reel. Disengage lock for each operation.

Note: pressure hose is not provided, it's sold separately. Applicable pressure hose max length is 100', max diameter is 3/8".



Assembly Instructions

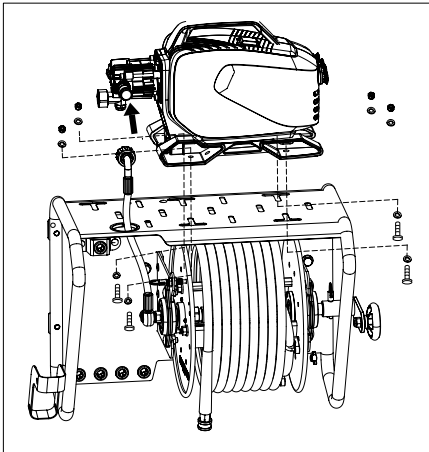
4. Assembly Instructions (cont.)

4.4 Shelf Mounting Your Pressure Washer

The Wall Mount Shelf comes with slots for direct mounting the Active 2.3 and for mounting the Active 2.0 with the support feet kit. (The Active 2.0 Support Feet Kit can be ordered separately from our website)

But if you wish to mount any other pressure washer:

1. Drill 4- 11 mm holes on the shelf according to the dimensions provided.
2. Place motor & pump assembly on the shelf and align with 4 holes, fasten 4 pcs bolt & nut set securely on shelf.



1. Align 4 holes on machine feet to top plate slots, secure machine on Active wall mount by bolt& nut sets. Bolt size is M8 x 20mm .
2. Attached jumper hose connector to pump outlet.

Note: machine and hardware are not provided, they are sold seperately.

Assembly Instructions



4. Assembly Instructions (cont.)

4.5 Installing Accessories

Hose

The Hose Reel comes with a 3/8" Female QC Plug.

1. Place the male end of the hose direct to the QC plug.
2. Use the provided hose lock to place the hose in place.
3. Use the hand crank to wrap the hose around the reel.

This hose reel supports upto 100' 3/8 diameter hose.

If your hose does not come with a 3/8" make plug, we highly recommend using an adapter to convert your hose end to a 3/8" male plug.

Nozzles

Place the Nozzles in the 4 slots provided.

Lance

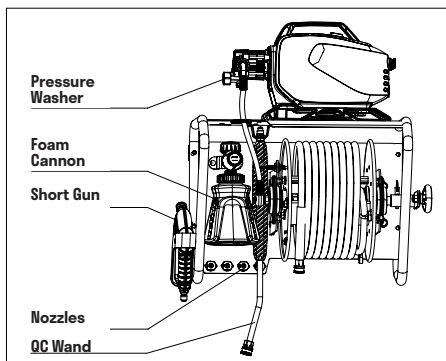
Place the lance in the provided slot.

Foam Cannon

Place the foam cannon in the provided slot.

Gun

Place the gun in the assembled gun holster.



Machine and attachment layout diagram.

Note: machine, foam cannon, short gun, pressure hose, QC wand and tips are not provided.

5. Technical Specifications

Peak pressure:	3000 PSI (20.7 MPa)
Rated pressure:	2100 PSI (14.5 MPa)
Peak flow rate (GPM):	3.5 GPM
Inlet water:	Cold tap water
Max pressure hose internal diameter	3/8"
Max pressure hose length	100'
Max pressure hose external diameter	3/4"
Max temperature	40°C / 104°F
Max loadweight	40 KG / 88 Lbs



Troubleshooting

6. Troubleshooting

Disconnect the device from the power source before making any repairs.

Problem	Cause	Solution
Leaking	The Hose Reel System is leaking	<ul style="list-style-type: none">• Ensure all connections are hand tightened and are not sealed with pipe thread. The connections are sealed by O-rings and do not require any pipe thread to be maintain leak free connections• Ensure you inspect all points of connections are free of debris and O-rings and bearings are intact so that there is no blockages on the flow of water and the seals maintain a leak free connection• If all connections are hand tightened and there are no prevailing blocks or damaged O-rings, contact support on support@activeproducts.com with your proof of purchase and images of the origin point of the leak. This will expedite troubleshooting and warranty support of parts exchange and installation guidance.
Rust Prevention	The Hose Reel and Frame are rusting.	<ul style="list-style-type: none">• To prevent any rusting this wall mount and reel kit comes with powder coated steel and stainless steel construction. But to minimize the effects or possibilities of rusting this product needs to be stored in a cool and dry place away from moisture and water collection. This also helps prevent any electric hazard whilst using the pressure washer.• The product parts have been powder coated to prevent rusting, but over time scratching can weaken the coating layer and joints can be exposed to rusting. This is part of the product wear and tear and is not covered under the warranty. To minimize rusting, you can prevent scratching of the surface or paint over any scratched surface of the kit.



Warranty



7. Warranty

Limited Warranty Statement

Congratulations on the purchase of your new ACTIVE™ wall mount and hose reel combo! This unit comes with a 2-year limited warranty.

This product is to be operated in compliance with the instructions in the operating guidelines. Failure to comply will result in denying warranty.

This warranty does not cover accidental damage, unreasonable use or use outside the scope of intended purpose, any changes made to the product (use of unauthorized accessories or spare parts), maloperation of the product (exceeding or not meeting electrical and input water requirements) and normal wear and tear like belts, chains and tine, use of improper detergents, freezing, neglect, or non-compliance with the operating Instructions.

The warranty does not cover loss of use or other consequential damages arising from any of the above, nor does it cover repairs made or attempted by unauthorized person.

IF YOU ENCOUNTER ANY ADDITIONAL DIFFICULTIES NOT LISTED, SCAN THE QR CODE.





Note





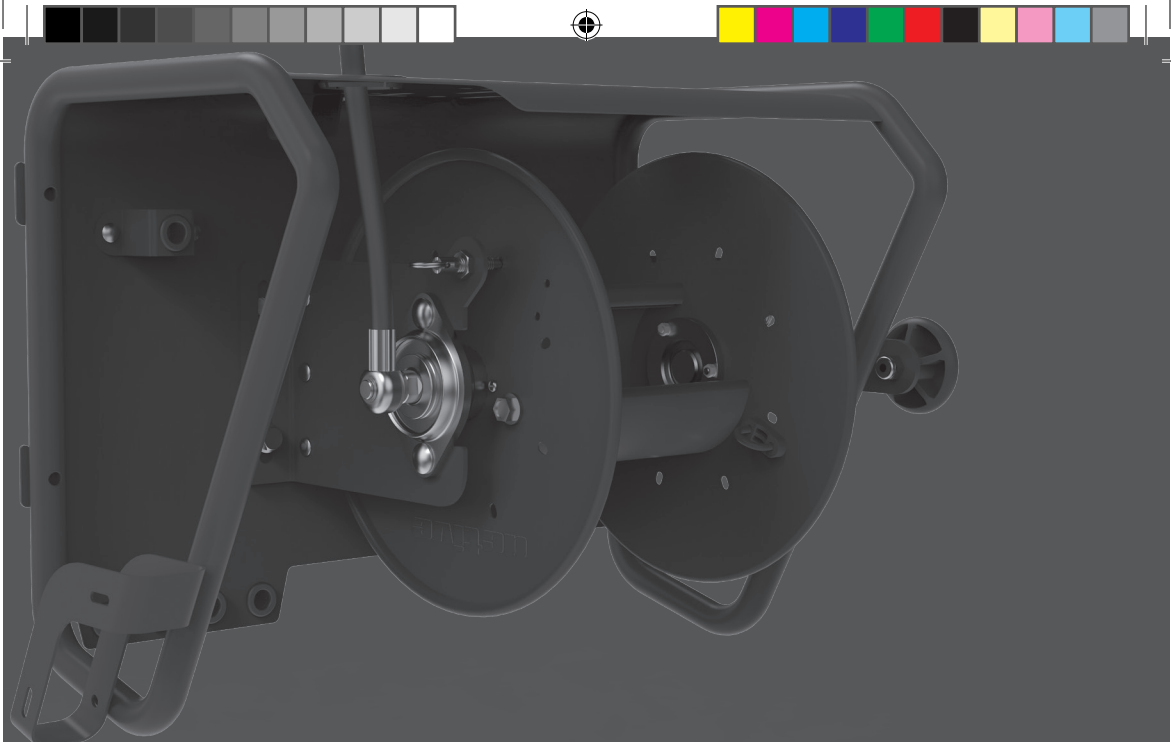
Note





Note





 **IMPORTANT SAFETY INSTRUCTIONS, KEEP THIS
INSTRUCTION MANUAL WITH MACHINE ALL TIMES.**

active